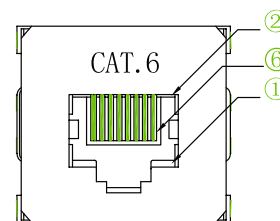
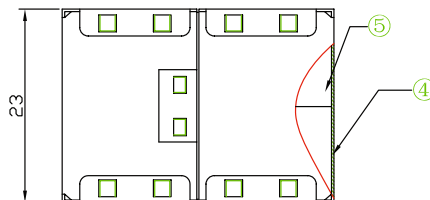
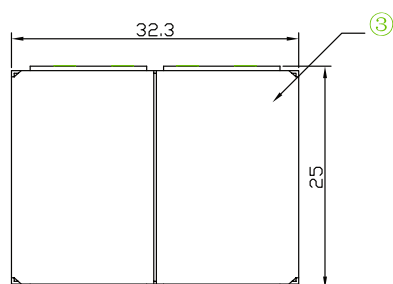
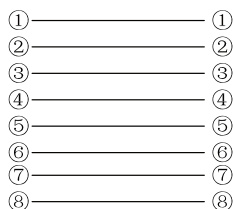


## INLINE® PATCHKABELKUPPLUNG CAT.6, 2X RJ45 BUCHSE, GESCHIRMT



- zum Verbinden von 2 Patchkabeln
- 2x RJ45 Buchse
- Metallgehäuse
- Cat. 6 geschirmt
- Belegung 1:1

### Connection Method



⑥	Contact	SPSC 6U™ Gold Plated	8
⑤	Base	ABS	1
④	roof cover	ABS	1
③	shielded enclosure	Nickel Plated brass t=0.3mm	2
②	PCB	FR-4, t=0.8	1
①	PCB outlet	PBT	2
NO	MAT. NAME	DESCRIPTION	QT'Y

### technical requirement:

1. The product should be followed with Cat 6 connection and technical standard;
2. Unmarked tolerance dimension on the basis of SJ/T10628 - 1995 6 grade;
3. The material should be ROHS approved.

**EAN: 4043718041084**  
**ART.-NR.: 69990B**