



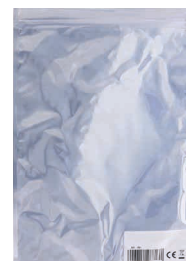
INLINE® SLIM SAS KABEL, SFF-8654 4I ZU U.2 SFF-8639 + SATA STROM, 24GB/S

InLine® Slim SAS Kabel zum Verbinden von U.2 Festplatten / SSD an den Controller

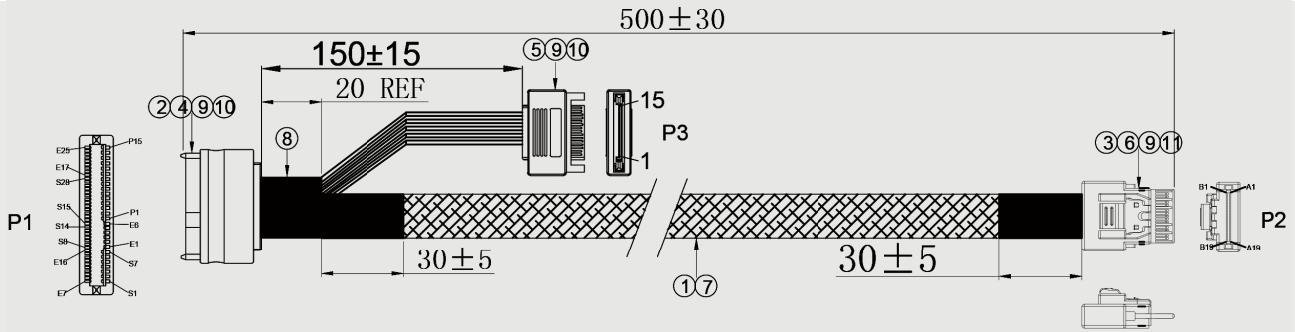
- Slim SAS 4i Stecker SFF-8654 an U.2 SFF-8639 Stecker + SATA Stromstecker
- Slim SAS Stecker mit Verriegelungs-Clip
- Konform zu den SAS 4.0 SFF-8654 Spezifikationen
- Für Datenübertragung bis 24Gb/s pro Kanal geeignet

Technische Daten:

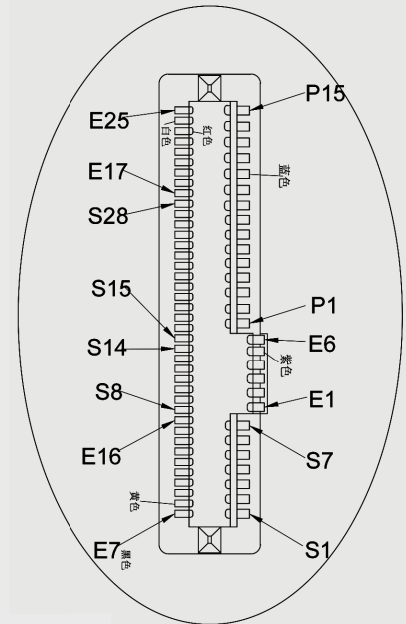
- Bauweise: Slim
- Farbe: Schwarz
- Hersteller: InLine®
- Seite A: SFF-8654 4i Stecker
- Seite B: SFF-8639 + Power Stecker
- Signal: Daten
- Typ: Slim SAS
- UL: Nein
- Verpackungsart: ESD-Bag ohne Eurolochung



Art. Nr.	Länge	EAN
27644A	0,50 m	4043718288601
27644B	1 m	4043718288618



⑪	outer mold	PBT,20%GF,BLACK,UL94V-0	NA	KG
⑩	outer mold	PVC,45P black,UL94V-0	NA	KG
⑨	in mold	LDPE, Transparent	NA	KG
⑧	Tape	UL94V-0 W=30mm, T=0.24mm, black	NA	M
⑦	Net	OD=8.0mm,NYLON, black single core	NA	M
⑥	shrapnel	For 8654,T=0.25mm	1	PCS
⑤	connector	SATA 15P/M G/F black	1	PCS
④	connector	SAS 68P/F soldering type 180 degree goldplated 15U, black	1	PCS
③	PCB 2	SFF-8654 PCB golden plated 30U Impedance 100 ohm green coating with white words	1	PCS
②	PCB 1	SFF-8639 PCB golden plated 30U Impedance 100 ohm green coating with white words	1	PCS
①	Cable	UL1007, 18AWG(41/0.16), Tin copper SR-PVC, OD=2.0mm	NA	M
		UL3302, 30AWG(1/0.25), Tin copper OD=0.80mm		
		UL20744 32AWG-1P+2EAM SAS CABLE 0.62*1.52MM blue 85oma		
		spec description		



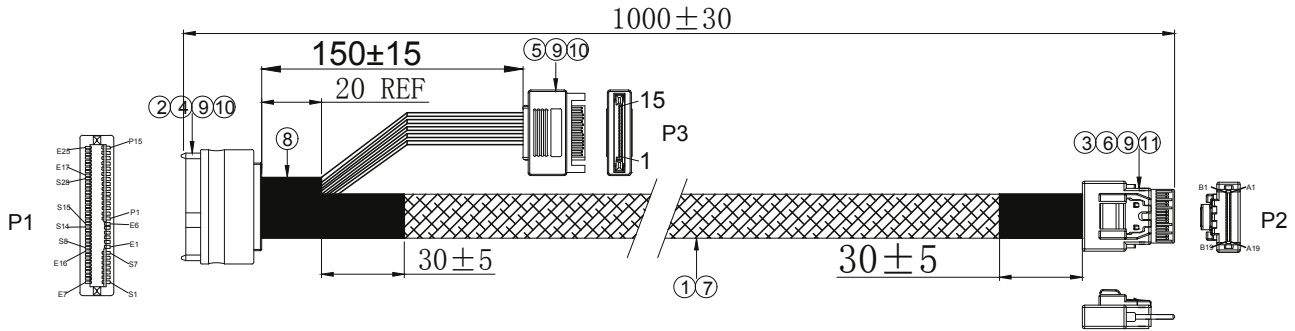
Wiring table

P2		P1	
GND	A1	E15	GND
PCIE TX0-	A2	E14	PCIE TX0-
PCIE TX0+	A3	E13	PCIE TX0+
GND	A4	E12/S22	GND
PCIE TX1-	A5	S21	PCIE TX1-
PCIE TX1+	A6	S20	PCIE TX1+
GND	A7	S19	GND
SB_CLK	A8	P1	WAKE#
SB_CLK	A9		
SB_DATA	A10	E7	REFCLK+
ACTMTY	A11	E8	REFCLK-
SCEBANO 2	A12	S28	GND
GND	A13	S27	PCIE TX2+
PCIE TX2+	A14	S26	PCIE TX2-
PCIE TX2-	A15	E22/S25	GND
GND	A16	E21	PCIE TX3+
PCIE TX3+	A17	E20	PCIE TX3-
PCIE TX3-	A18	E19	GND
GND	A19	E9	GND
GND	B1	E10	PCIE RX0-
PCIE RX0-	B2	E11	PCIE RX0+
PCIE RX0+	B3	E12/S16	GND
GND	B4	S17	PCIE RX1-
PCIE RX1-	B5	S18	PCIE RX1+
PCIE RX1+	B6	S19	GND
GND	B7		GND
GND	B8		
RST	B9		
GND	B10		
CLOCK+	B11	E5	RST
CLOCK-	B12	P4	IFDET_N
GND	B13	S22	GND
PCIE RX2+	B14	S23	PCIE RX2+
PCIE RX2-	B15	S24	PCIE RX2-
GND	B16	S25/S28	GND
PCIE RX3+	B17	E17	PCIE RX3+
PCIE RX3-	B18	E18	PCIE RX3-
GND	B19	E19	GND

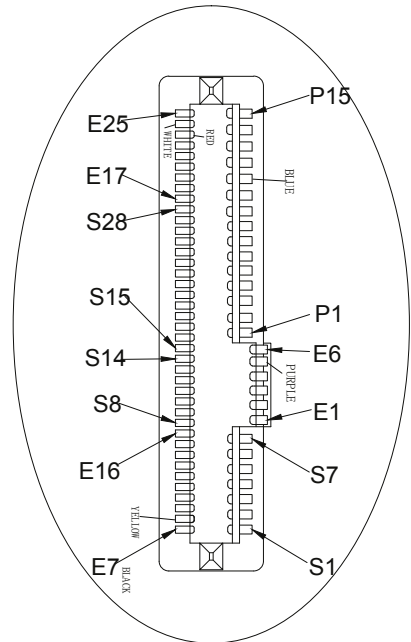
	P1	P3	Wire Size
orange	大E3	1+2+3	(18AWG)
black	P5+P6	4+5+6	(18AWG)
red	P7+P8+P9	7+8+9	(18AWG)
black	P12	10+11+12	(18AWG)
yellow	P13+P14+P15	13+14+15	(18AWG)

Electrical characteristics:

- 100% OPEN & SHORT TESTING
- WITH STANDING VOLTAGE:DC 300V 0.01Sec
- INSULATION RESISTANCE:10M Ohm(Min)
- CONDUCTIVE RESISTANCE: 2Ohm(Max)
- Characteristic impedance 100ohms



⑪	Overmoulding material 1	PBT, 20%GF, BLACK, UL94V-0	NA	KG
⑩	Overmoulding material 1	PVC, 45P, black, UL94V-0	NA	KG
⑨	Inner moulding material	LDPE, transparent, UL94V-0	NA	KG
⑧	Acetic tape	W=30mm, T=0.24mm, black	NA	M
⑦	Mesh	OD=8.0mm, NYLON, single braided	NA	M
⑥	Latch	For 8654, T=0.25mm	1	PCS
⑤	Connector2	SATA 15P/M G/F Black	1	PCS
④	Connector1	SAS 68P/F Soldering Type 180° Gold Plated 15U Black	1	PCS
③	PCB 2	SFF-8654 PCB Golding plated 30U Green oil white printing, Impedance 100 ohm	1	PCS
②	PCB 1	SFF-8639 PCB Golding plated 30U Green oil white printing, Impedance 100 ohm	1	PCS
①	Wire	UL1007, 18AWG (41/0.16), Tinned copper, SR-PVC, OD=2.0mm	NA	M
		UL3302, 30AWG (1/0.25), Tinned copper, OD=0.80mm		
		UL20744 32AWG-1P+2EAM SAS CABLE 0.62*1.52MM Blue 85Ω		
No.	Item Name	Specifications	Quantity	Unit



Wiring table

P2		P1	
GND	A1	E15	GND
PCIE TX0-	A2	E14	PCIE TX0-
PCIE TX0+	A3	E13	PCIE TX0+
GND	A4	E12/S22	GND
PCIE TX1-	A5	S21	PCIE TX1-
PCIE TX1+	A6	S20	PCIE TX1+
GND	A7	S19	GND
SB_CLK	A8		
SB_CLK	A9	P1	WAKE#
SB_DATA	A10		
ACTMTY	A11	E7	REFCLK+
SCEBANO 2	A12	E8	REFCLK-
GND	A13	S28	GND
PCIE TX2+	A14	S27	PCIE TX2+
PCIE TX2-	A15	S26	PCIE TX2-
GND	A16	E22/S25	GND
PCIE TX3+	A17	E21	PCIE TX3+
PCIE TX3-	A18	E20	PCIE TX3-
GND	A19	E19	GND
GND	B1	E9	GND
PCIE RX0-	B2	E10	PCIE RX0-
PCIE RX0+	B3	E11	PCIE RX0+
GND	B4	E12/S16	GND
PCIE RX1-	B5	S17	PCIE RX1-
PCIE RX1+	B6	S18	PCIE RX1+
GND	B7	S19	GND
GND	B8		GND
RST	B9		
GND	B10		
CLOCK+	B11	E5	RST
CLOCK-	B12	P4	IFDET N
GND	B13	S22	GND
PCIE RX2+	B14	S23	PCIE RX2+
PCIE RX2-	B15	S24	PCIE RX2-
GND	B16	S25/S28	GND
PCIE RX3+	B17	E17	PCIE RX3+
PCIE RX3-	B18	E18	PCIE RX3-
GND	B19	E19	GND

P1	P3	Color of electronic wire
Big E3	1+2+3	(18AWG)Orange
P5+P6	4+5+6	(18AWG)Black
P7+P8+P9	7+8+9	(18AWG)Red
P12	10+11+12	(18AWG)Black
P13+P14+P15	13+14+15	(18AWG)Yellow

Remarks:

- 100% conductivity test for finished products;
- Insulation Resistance: 10M Ohms DC 300V 0.01S;
- Conduction Resistance: 3 Ohms;
- The product complies with EU RoHS environmental standards;