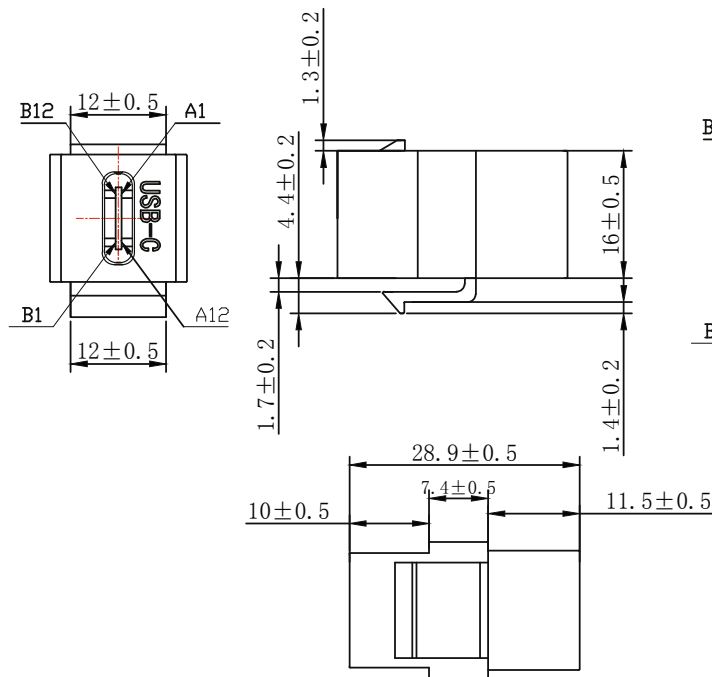


INLINE® USB 3.1 KEYSTONE SNAP-IN EINSATZ, USB-C BUCHSE / BUCHSE

- USB 3.1 (Gen.2) USB Typ-C Buchse / Buchse
- Datenübertragung bis 10Gb/s
- Unterstützt USB Power Delivery bis max. 3A
- Gehäusematerial: Kunststoff schwarz
- zum Einbau in Snap-In Modulplatten, -Patchfelder



PIN OUT

A1	—	A1	B1	—	B1
A2	—	A2	B2	—	B2
A3	—	A3	B3	—	B3
A4	—	A4	B4	—	B4
A5	—	A5	B5	—	B5
A6	—	A6	B6	—	B6
A7	—	A7	B7	—	B7
A8	—	A8	B8	—	B8
A9	—	A9	B9	—	B9
A10	—	A10	B10	—	B10
A11	—	A11	B11	—	B11
A12	—	A12	B12	—	B12

NOTES:

1. Electrical test:

- (1). 100% open short & miss wire test;
- (2). Insulation resistance: DC 300V 10MΩ Min;
- (3). Contactor resistance: 3Ω Max;

Data Transfer: 10Gbps Voltages: 5V Current: 3A, RoHS 2.0 and REACH Compliant

②	Housing	ABS	1
①	Connector	USB C Female, Black insulation The Pin Gold Plating, the Shell For Nickel plating	2
NO.	PARTS NAME	SPECIFICATION STANDARD	QT' Y

Art. Nr.	Farbe	EAN
76201Z	schwarz	4043718278411
76201W	weiß	4043718304196