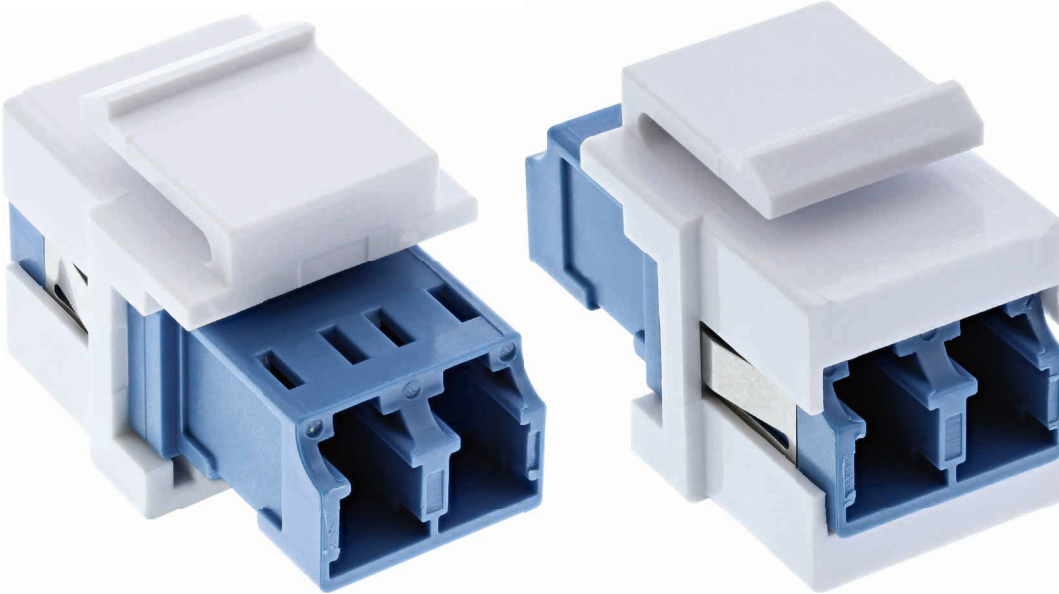
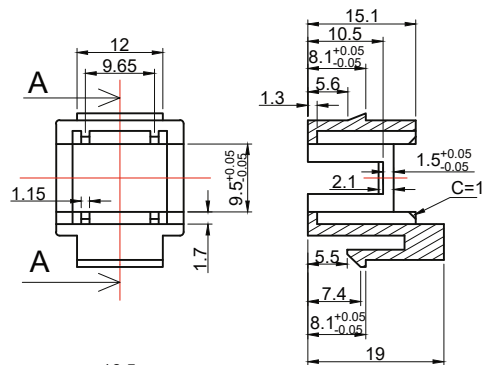
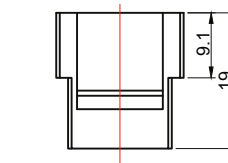
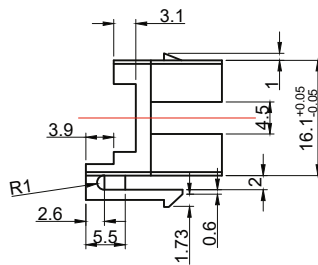
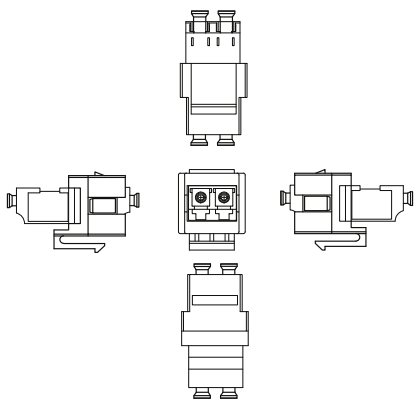


INLINE® LWL KEYSTONE SNAP-IN KUPPLUNG WEISS, DUPLEX LC/LC, SINGLEMODE, BLAU, KERAMIK-HÜLSE

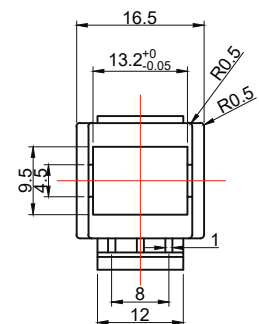
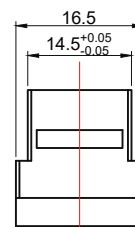


Die InLine® LWL Keystone Snap-in Kupplung dient zum Verbinden von 2 LWL-Kabeln mit LC-Stecker. Die Snap-in-Bauform (auch Keystone genannt) ermöglicht den Einbau in entsprechende Patchfelder, Wanddosen, Bodentank-Steckdosen, etc.

- LWL Keystone Snap-in Kupplung weiß, blaues Innengehäuse
- Duplex LC Buchse beidseitig
- Für singlemode LWL-Fasern
- Mit Keramik-Hülse
- PC, UPC und APC kompatibel



SECTION A-A



NOTES:

1. ABS White
2. Keystone for LC duplex/SC simplex w/o flange Adapter
3. RoHS 2.0 AND REACH COMPLIANT

EAN: 4043718277902
ART.-NR.: 89988A